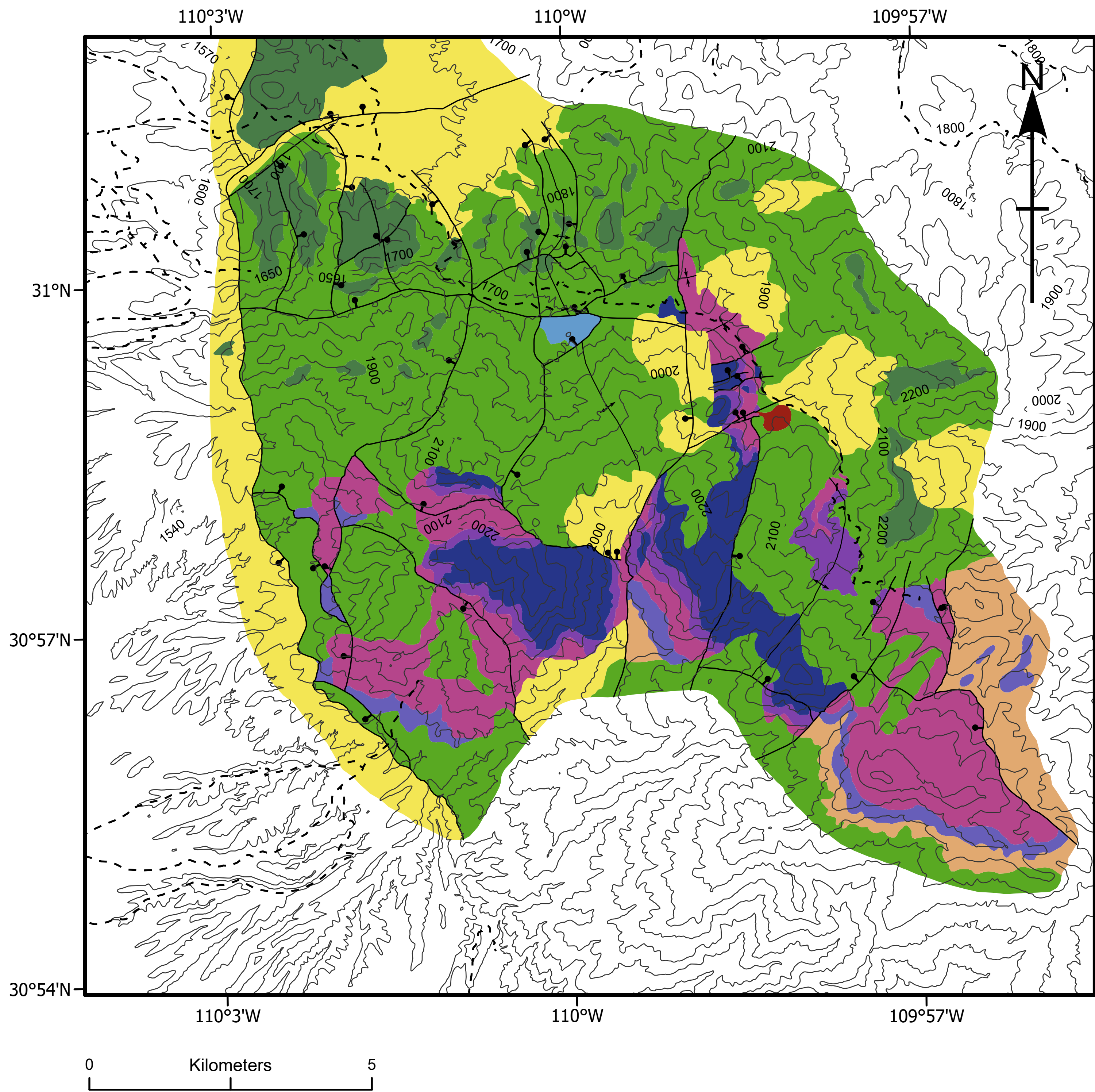


Geologic map of Sierra Los Ajos area (Sonora). Based on Page et al. (2010)



Legend

- | | |
|-------------------------------------|-------------------------------|
| Non-differentiated Quaternary rocks | Abrigo Formation (Cambrian) |
| Intrusive rocks (Miocene) | Bolsa Formation (Cambrian) |
| Upper Cretaceous rocks, upper part | Pinal Formation (Proterozoic) |
| Upper Cretaceous rocks, lower part | Anticline |
| Horquilla Limestone (Pennsylvanian) | Normal fault |
| Escabrosa Formation (Mississippian) | Syncline |
| Martin Formation (Devonian) | Dirt road |

Projection: WGS 1984 World Mercator (Datum: D WGS 1984, Spheroid: WGS 1984)